

PRODUCT INFORMATION

Histostaining | Artisan Link Pro



Agilent Pathology Solutions

Artisan Link Pro.

The consistent, safe and easy choice for special stains.



Agilent Technologies

Experience true automation with Artisan Link Pro.

Special stains present a unique challenge for many labs. While there are numerous special stains available, the knowledge needed to perform them may not always be at hand. Manually performed special stains are often time-consuming and the results inconsistent, having a direct impact on the time to diagnosis and result certainty. Finally, the chemicals required for these stains can be a health hazard for lab staff as well as an environmental hazard.

Artisan Link Pro is a unique special stains solution that addresses all of these needs and more, seamlessly integrating into your laboratory's workflow. By fully automating the entire process from drying and clearing through to finished slides, Artisan Link Pro is the consistent, safe and easy-to-use solution.

Consistent

Get truly exceptional staining consistency from a reliable, proven and fully automated instrument.

Safe

Improve operator and environmental safety, compared to manual staining.

Easy to use

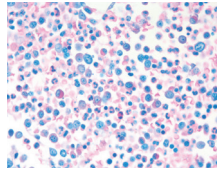
Make special stains simple with an extensive menu of automated stains, advanced editing of protocols and an optimized workflow.



Artisan Link Pro is the third generation platform. Building on over ten years of experience in pathology this solution is proven and reliable.

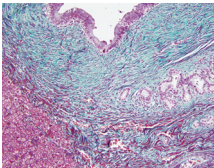
In safe hands with the broadest palette of 30 automated special stains.

Bone Marrow

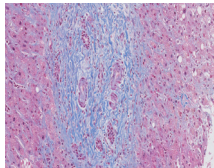


AR308
Jenner-Wright Giemsa

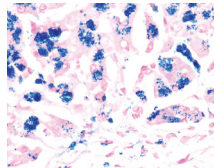
Liver



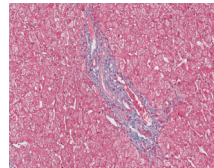
AR166
Gomori's Green Trichrome



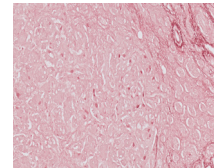
AR167
Gomori's Blue Trichrome



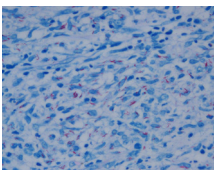
AR158
Iron



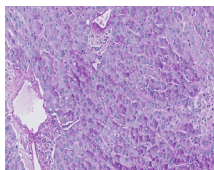
AR173
Masson's Trichrome



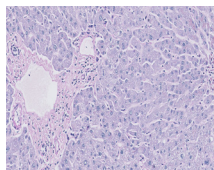
AR313
Orcein



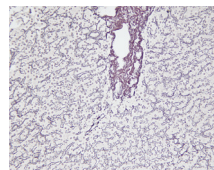
AR162
Acid-Fast Bacteria



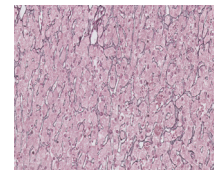
AR165
Periodic Acid-Schiff



AR165 + AR171
PAS with Alpha-Amylase

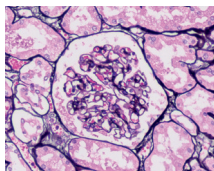


AR182
Reticulin/No Counterstain

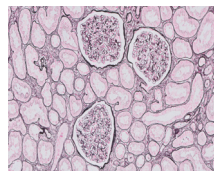


AR179
Reticulin/Nuclear Fast Red

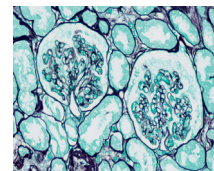
Kidney



AR480
Jones' Basement
Membrane H&E



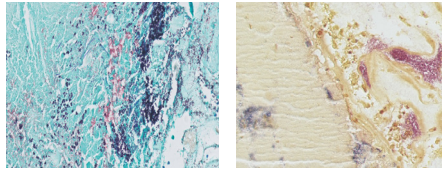
AR180
Jones' Basement
Membrane



AR380
Jones' Basement
Membrane Light Green

Several stains are validated for multiple applications. Typical examples are shown.

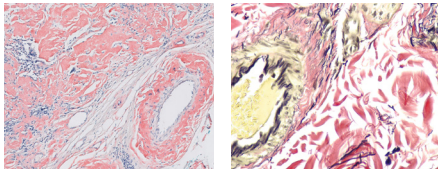
Skin



AR175
Gram

AR306
Gram Yellow

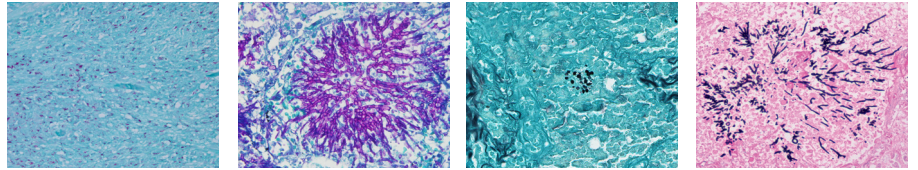
Cardiovascular System



AR161
Congo Red

AR163
Elastic

Lung



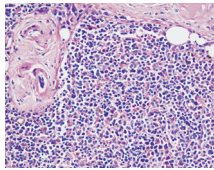
AR362
Acid-Fast Bacteria Light
Green

AR172
Periodic Acid-Schiff Green

AR176
Grocott's Methenamine
Silver

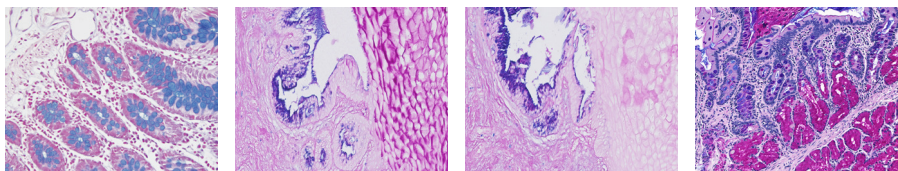
AR376
Grocott's Methenamine
Silver Eosin

Spleen



AR164
Giemsa

Gastrointestinal Tract

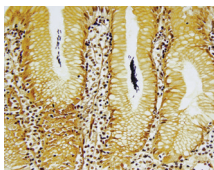


AR160
Alcian Blue pH 2.5

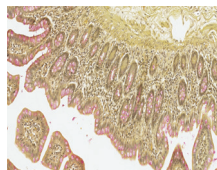
AR169
Alcian Blue/PAS

AR169 + AR171
Alcian Blue/PAS with
Alpha-Amylase

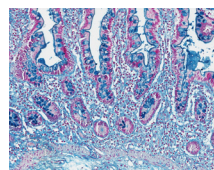
AR178
Alcian Blue/PAS/
Hematoxylin



AR181
Warthin-Starry



AR168
Mucicarmine



AR307
Colloidal Iron



Consistent

- High-quality reagents
- Standardized and validated protocols
- Reagents dispensed with precision
- Proven technology with minimal maintenance
- Full automation with onboard drying and clearing, and individual slide heating

Safe

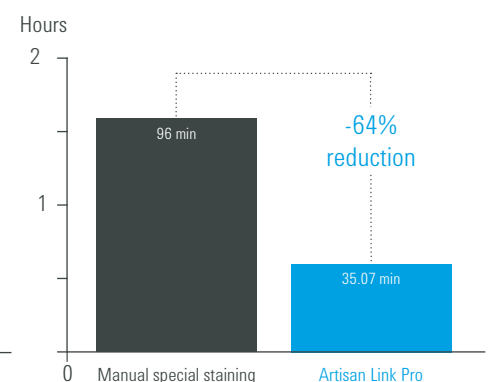
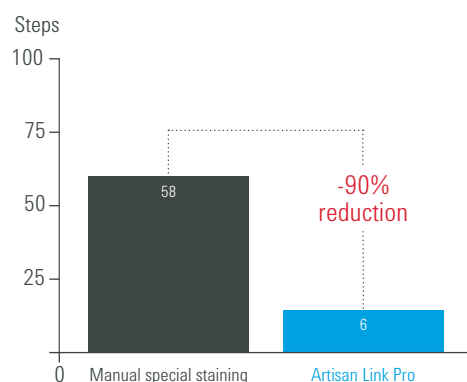
- Closed staining system and closed ready-to-use reagent cartridges
- Staining chamber ventilation (optional)
- Unique patented waste separation into four separate disposal streams
- Deparaffinization with non-hazardous Artisan Clearing Solution
- Reporting capabilities for accreditation and quality assurance

Easy to use

- 30 high-quality automated special stains, the largest menu available
- 48 slide capacity enables overnight runs, the highest within special stains
- Run up to 14 different stains simultaneously
- Flexible protocols, editable according to the preferences of your lab
- Intuitive operation with DakoLink software integration with LIS and LAN connectivity

Maximize lab efficiency and optimize your workflow

Artisan Link Pro significantly reduces manual steps and saves time.

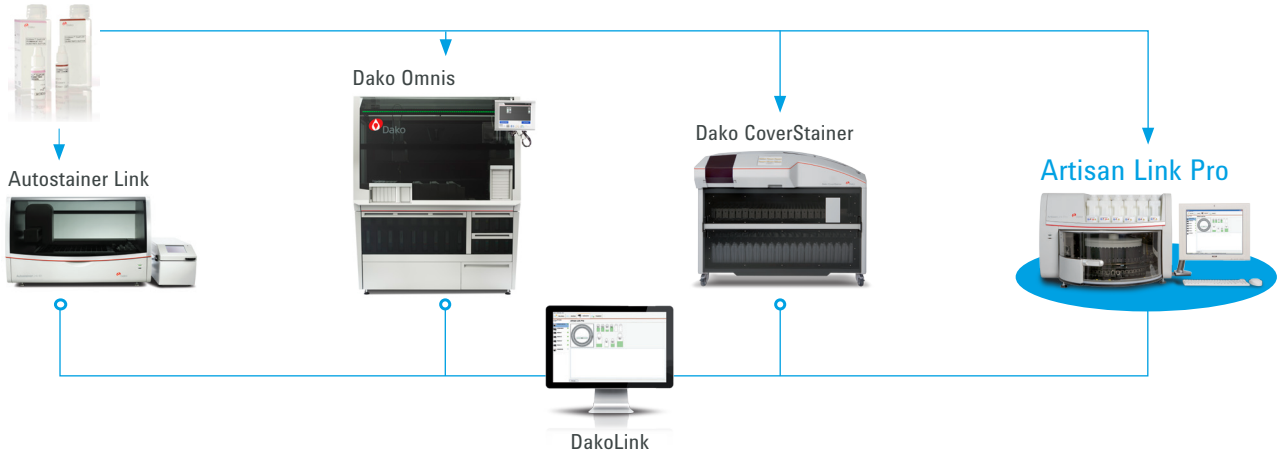


More than three minute breaks were not counted into hands-on time. Dako data on file.

Keep your lab a step ahead.

We provide integrated solutions that are designed to meet your needs and help your lab deliver the correct results to the right patient every time. The entire range of complementary Dako products exemplifies our focus on providing trusted answers, together with our customers.

Ready-to-use reagents



Artisan Link Pro is the consistent, safe and easy-to-use solution for special stains.

Component	Description
Dimensions	32" W x 26" D x 20.5" H (80 cm W x 67 cm D x 52 cm H)
Weight	150 lbs (68 kg)
Total slide capacity	48 glass slides (25 mm and 26 mm)
Total reagent capacity	50 reagent packs
Pack size	50 test pack: 200 dispense strokes, 100 ml test pack: 400 dispense strokes
Bulk fluid capacity	Six 1 L bottles (optional: 1 off-board 4 L bottle)
Reagent waste capacity	Two 2 L bottles, two 4 L bottle

For additional information on Artisan Link Pro or other Dako solutions, contact your local representative or visit www.dako.com



Agilent Pathology Solutions

www.dako.com

Represented in more than 100 countries

Australia
+61 2 9922 0700

Austria
+43 1 408 43 34 0

Belgium
+32 (0) 16 38 72 20

Brazil
+55 11 50708300

Canada
+1 905 335 3256

China
+86 21 3612 7091

Denmark
+45 44 85 97 56

Finland
+358 9 348 73 950

France
+33 1 64 53 61 44

Germany
+49 40 69 69 470

Ireland
+353 1 479 0568

Italy
+39 02 58 078 1

Japan
+81 3 5232 9970

Korea
+82 2 2194 9577

The Netherlands
+31 20 42 11 100

Norway
+47 23 14 05 40

Poland
+48 58 661 1879

Spain
+34 93 344 57 77

Sweden
+46 8 556 20 600

Switzerland
+41 41 760 11 66

United Kingdom
+44 (0)1 353 66 99 11

United States of America
+1 805 566 6655