



LIAISON[®] 

LIAISON[®]X

INNOVATION TO MEET YOUR NEEDS





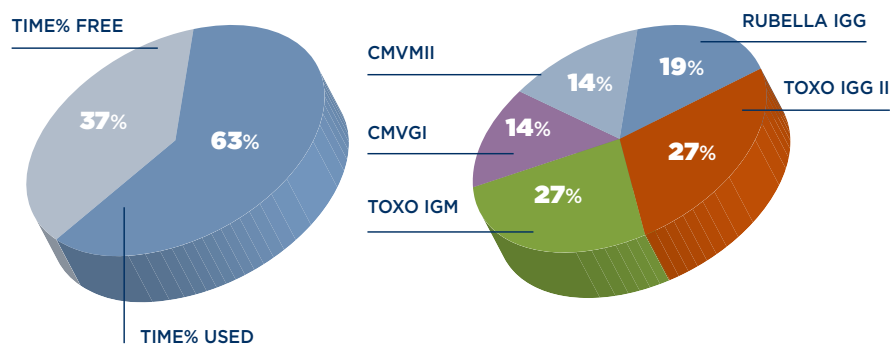
High Throughput

The throughput is optimized splitting the pipetting phases of Reagents and Samples into different cycles. The innovative technical solutions adopted by LIAISON® XL, as the double washing capacity, the incubator that may host up to 80 cuvettes and the optimization of the assay process, can keep the **throughput of system as high as possible**.

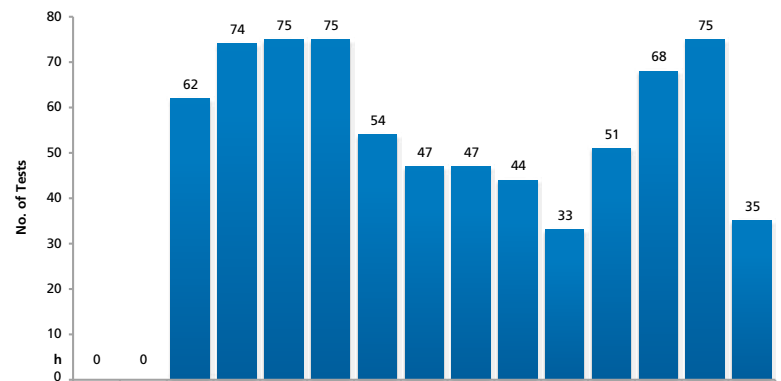
XLAB Software

A professional simulator software, **XLAB**, allows DiaSorin specialist to tailor efficient organization based on your workflow.

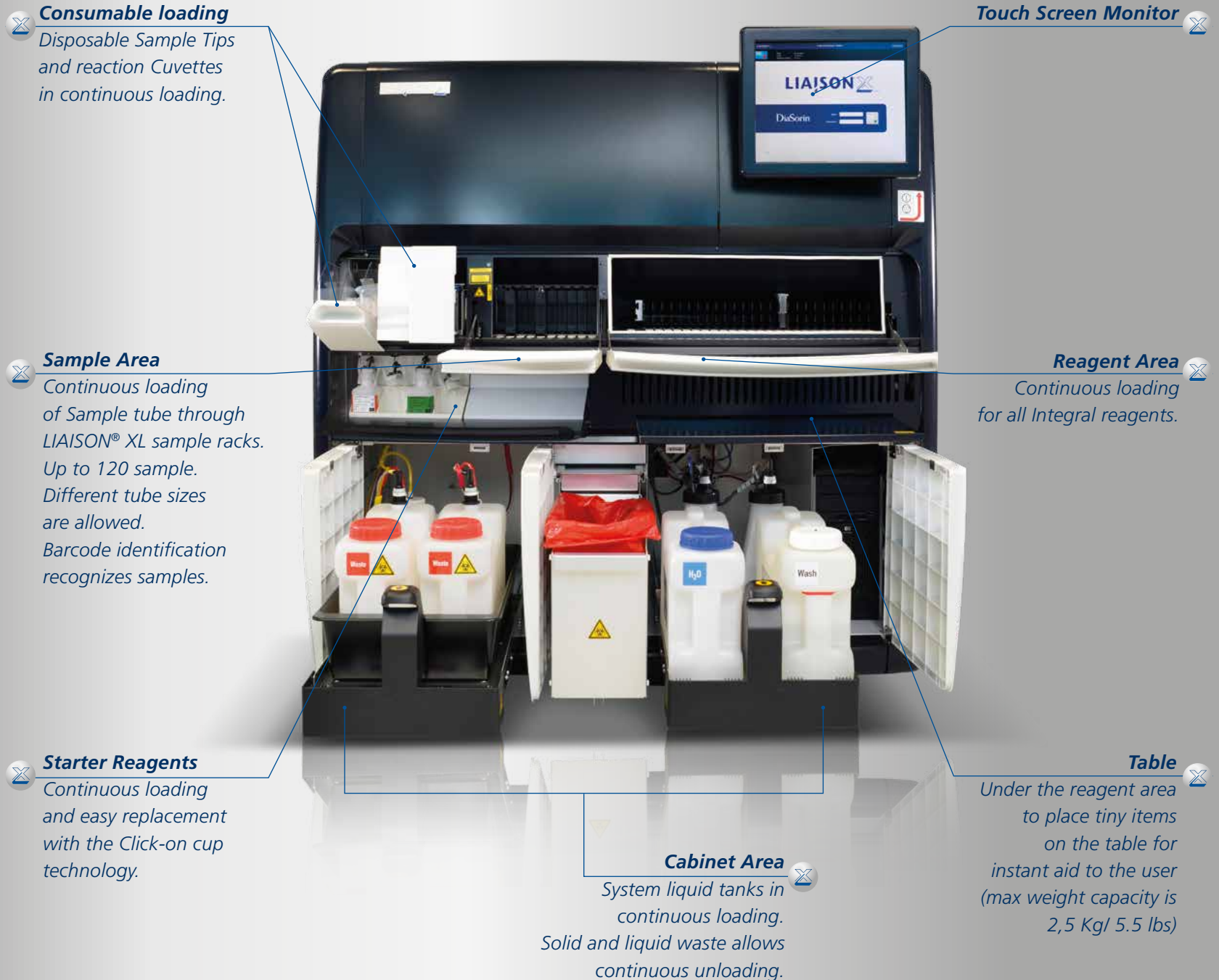
ASSAY DISTRIBUTION



RESULTS DISTRIBUTION



COMPACT AND EFFICIENT DESIGN



Consumable loading

Disposable Sample Tips and reaction Cuvettes in continuous loading.

Touch Screen Monitor

Sample Area

Continuous loading of Sample tube through LIAISON® XL sample racks. Up to 120 sample. Different tube sizes are allowed. Barcode identification recognizes samples.

Reagent Area

Continuous loading for all Integral reagents.

Starter Reagents

Continuous loading and easy replacement with the Click-on cup technology.

Cabinet Area

System liquid tanks in continuous loading. Solid and liquid waste allows continuous unloading.

Table

Under the reagent area to place tiny items on the table for instant aid to the user (max weight capacity is 2,5 Kg/ 5.5 lbs)



Integral Technology

LIAISON® XL utilizes **chemiluminescence technology** with magnetic microparticles, the same proven quality technology used for **LIAISON®**.

All the components are **ready to use** in one Integral.

Most of the Integrals, f.e. all the Infectious Disease tests, **include the calibrators**.

The Integral technology with long term of stability on board, improves efficiency and results standardization.

Reagents area

The loading bay for reagents allows a **continuous loading** of the LIAISON® XL system with reagents in the form of Integrals or ancillary. The operator will be driven by a led-light in order to optimize the load and unload activities. **Up to 25 Integrals** and up to 4 ancillary reagents can be used at the same time. The high number of reagents and consumable loaded on board, reduces the operator activities and **improves the walk away** time. Integrals can be loaded directly in one of the 25 lanes according to the specifications of the LIAISON® XL, **multiple of the same Integral can be loaded** at the same time if needed. Upon exhaustion of one Integral, **the instrument switches automatically to the next** inserted reagents, in case of lot consistency LIAISON® XL recognizes position, expiration date and lot number of reagents loaded. **All the information is updated automatically** during the process.



Maximize quality

LIAISON® XL **prevents sample carry over** due to adoption of single cavity reaction module (cuvette) and sample tips.

Both are in continuous loading and the software monitors the quantity on board. Single-cavity reaction cuvettes can be loaded with any orientation. In each sample are detected Clot and/or risk of insufficient Volume by pressure profile sensor. The high number of cuvettes and sample tips on board allows an high walk away system.

Easy to use and long walk way time

According with the IFU of each assay, most of the tests **don't require any daily maintenance**.

LIAISON® XL informs the user when maintenance is due and monitors the scheduled needs automatically. The Cabinet area of LIAISON® XL offers the **continuous loading** of System Liquid tanks and the **continuous unloading** of Liquids and Solid waste.

The high consumable volumes on board offer a long walk away time.

LIAISON® XL recognizes position and lot number of each bottle of **Starter Reagents** and upon exhaustion of a starter bottle, **it switches automatically to the next inserted bottle**, in case of lot consistency.

The replacement is in **continuous loading** and extremely easy due to the "Clip-on" technology. All the information is **updated automatically** during the process.



Easy to use with functional icons that help the operator, the LIAISON® XL Software allows the laboratory to achieve a superior level of efficiency and a complete traceability of its activities. The communication between operator and instrument requires neither keyboard nor mouse.

Performance Monitoring

- The software informs the operator about the **status of systems** (Stand by; Ready; Run) and the amount of reagents and consumable available on board.
- Through the features **System Test Statistics** the operator is allowed to monitor all the Successful and the Failed samples or Control.
- System gives the user upfront estimation of the consumable volumes needed to perform the number of tests requested and allows the user to increase the consumable volume before starting or during the routine.
- LIAISON® XL Software is connectable to LIS (Laboratory Information System) and offers a **Service remote access** with direct access from our central service to the system.

Traceability

- All the activities planned and scheduled are **continuously monitored** and all the results, samples and calibrators and quality controls, **are traced**.
- In every screen-page there is the **Help features**, that offer to the operator an **On-Line Operator Guide**.

TECHNICAL SPECIFICATIONS



OVERVIEW

System description
Throughput
Time to first result
Assays on board

Random access or batch immunoassay system
Up to 180 tests per hour
17 minutes - assay dependent
25



SAMPLES AND SAMPLE HANDLING

Sample racks
Sample capacity
Walk-away time
Stat handling
Sample type
Sample integrity control

6-mm to 15-mm internal diameter. Up to 100-mm height
120 samples, 12-position sample racks in a 10-lane sample area
Approximately 6 hours
STAT may be assigned to any position in the sample area
Serum / plasma / urine / CSF

- Pneumatic-based level sensor
- Aspirated/dispensed volume detection and flagging
- Clot detection and flagging

Absent due to the use of LIAISON® XL Disposable Tips

Sample carryover



BARCODES

Sample tubes (all reading types may be active simultaneously)
Control sera

EAN / Code 128 / Code 39 / Cod-a-bar / Interleaved 2 of 5
2D barcodes recognized by hand-held scanner



REAGENTS AND REAGENT HANDLING

Reagent cooling
Reagent integrity control

13°C ± 2°C / 52°F ± 59°F

- Radio Frequency identification (RFID)
- Automatic inventory tracking and updating to integral RFID tag
- Tracking of calibration validity
- Tracking of on-board stability

Reagent capacity

25-position cooled storage for reagent integrals + 4 position cooled storage for reagent ancillaries



CONSUMABLE CAPACITY

Cuvettes
Disposable Tips
DI Water
Wash Buffer
System cleaning solution

On board capacity: up to 1000
On board capacity: 576
10-L container + 2-L reservoir
10-L container + 2-L reservoir
2-L container



WASTE CAPACITY

Solid waste
Liquid waste

Up to 2500 Disposable tips and cuvettes
A second container allows an instrument autonomy of 15 min
2 x 10-L containers



CONTINUOUS OPERATION

Loading/unloading of items during system operation

Includes:
Sample racks / Reagent integrals / Ancillaries / Cuvettes / Disposable tips / Control racks / Wash liquid / System liquid / Liquid waste / Solid waste / Starter reagents



USER INTERFACE

Operating system Monitor GUI

Microsoft® Windows®
17" diagonal LCD touch sensitive screen

- Quick access to all pages
- Critical events and actions recorded
- Software-guided and logged maintenance



RESULTS MANAGEMENT

Viewing and editing

- Results available at all times
- Sort, search, filter (display customization available)
- Possibility of evaluation, validation and release of results prior to printing or LIS reporting

Retest always available, even automated based on predefined rules
Results can be stored manually or automatically
Compliant with privacy / safety regulations

Retest
Back-up
Privacy/safety



QUALITY CONTROL

Package

Long-term monitoring including L-J graphs covering Westgard and RilibÄK rules

Access
Rule definitions

Accessible at all times
Available to users



ENVIRONMENTAL FEATURES

Operating temperature
Operating humidity
Electrical
Dimensions (excludes monitor and accessories)

15-32°C / 59°F ± 90°F
10%-85% RH non condensing
90-240v, 50-60 Hz
Height: 59 in or 150 cm
Width: 59 in or 150 cm
Depth: 36 in or 90 cm
LIAISON® XL 661 lbs or 300 kg (includes Monitor and Accessories)
63.9 dBA at operator normal position

Weight
Noise

LIAISON® XL DELIVERS VALUE



- ⌚ **Fully automated solution**
 - Continuous loading of samples, reagents and consumables.
- ⌚ **Quality of results**
 - Proven technology.
- ⌚ **Flexible configuration**
 - DiaLink 3000 is the DiaSorin middleware to connect multiple LIAISON® offering a unique operator interface;
 - LIAISON® XL is suitable for “point in space” connectivity to Laboratory Automation Systems.
- ⌚ **High efficiency**
 - Long walk-away;
 - High Throughput;
 - Low maintenance.
- ⌚ **Safe process**
 - Traceability;
 - Avoid carry over;
 - Remote assistance.

Ordering information

LIAISON® XL (code 10050)

*LIAISON® XL LAS (code 10050LAS)

LIAISON® XL Workcell Upgrade Kit (code 100001197)

LIAISON® Wash/System Liquid (code 319100)

LIAISON® XL Cuvettes (code X0016)

LIAISON® XL Disposable Tips (code X0015)

LIAISON® XL Starter Kit (code 319200)

LIAISON® XL Cleaning Tool (code 310995)

LIAISON® XL Waste Bags (code X0025)

LIAISON® Light Check 12 (code 319150)

LIQUI-NOX (code X0022)

*FOR OUTSIDE THE US AND CANADA ONLY

CHECK AVAILABILITY IN YOUR COUNTRY BY CONTACTING THE DIASORIN SUBSIDIARY OR THE DISTRIBUTOR ON SITE

A Wide Range of Specialty Tests





M0870004248/F 10/16

Product availability subject to required regulatory approval



The Diagnostic Specialist

DiaSorin S.p.A.
Via Crescentino, snc
13040 Saluggia (VC) Italy
Tel. +39 0161 487 526/947
Fax +39 0161 487 670
www.diasorin.com
info@diasorin.it